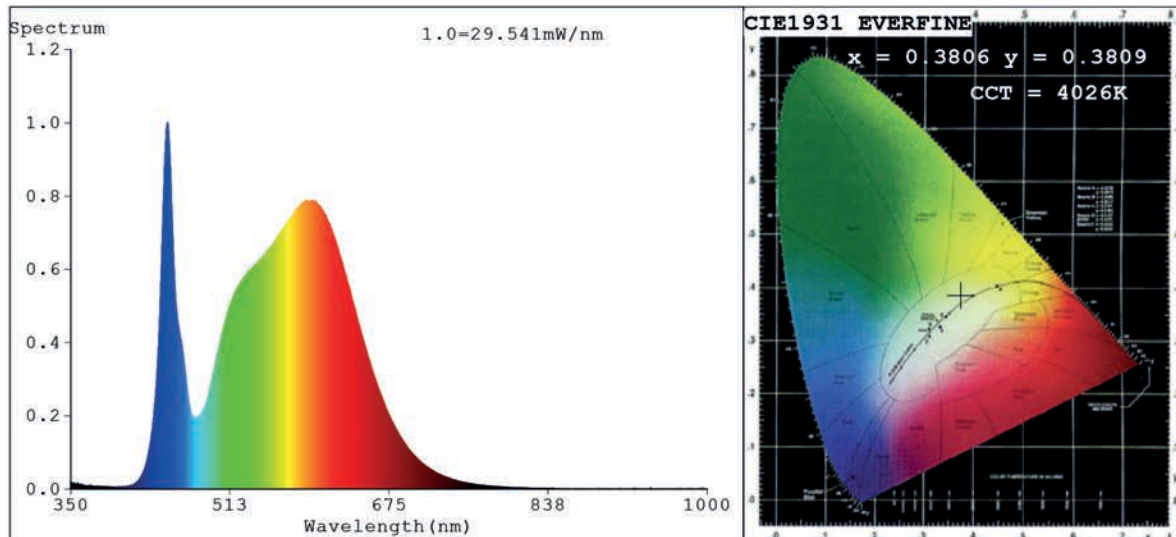


Spectrum Test Report



Color Parameters:

Chromaticity Coordinate: $x=0.3806$ $y=0.3809$ $u'=0.2236$ $v'=0.5034$
 CCT=4026K (Duv=0.0019) Dominant WL:Ld =578.0nm Purity=28.5%
 Ratio:R=18.1% G=78.6% B=3.3%; Peak WL:Lp=448.5nm FWHM=16.7nm
 Render Index:Ra=82.0 CRI=75.0 TM30:Rf=82 Rg=96 Lav=568.6nm
 R1 =80 R2 =87 R3 =93 R4 =82 R5 =80 R6 =83 R7 =86
 R8 =64 R9 =5 R10=70 R11=81 R12=59 R13=82 R14=96 R15=74

Photo Parameters:

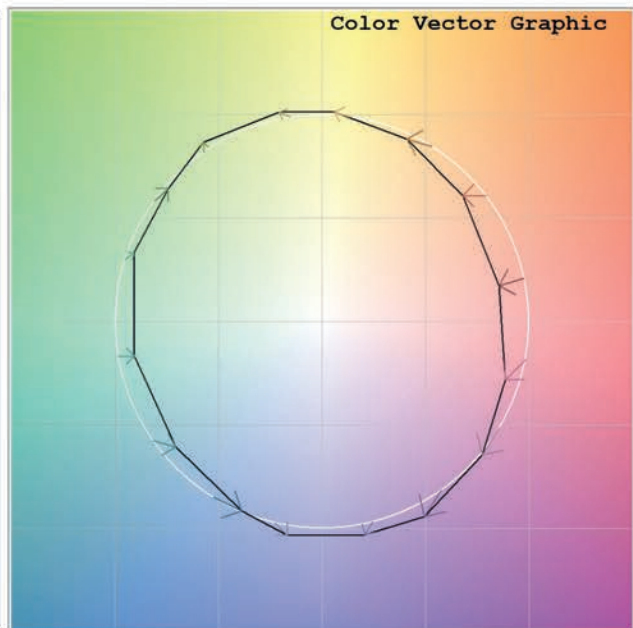
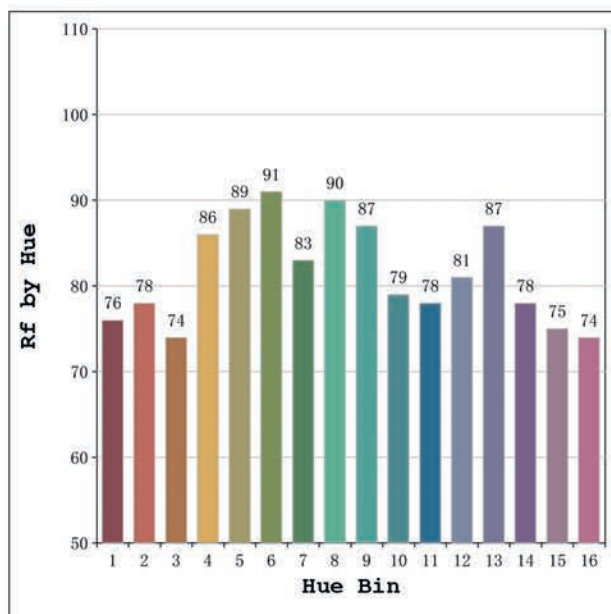
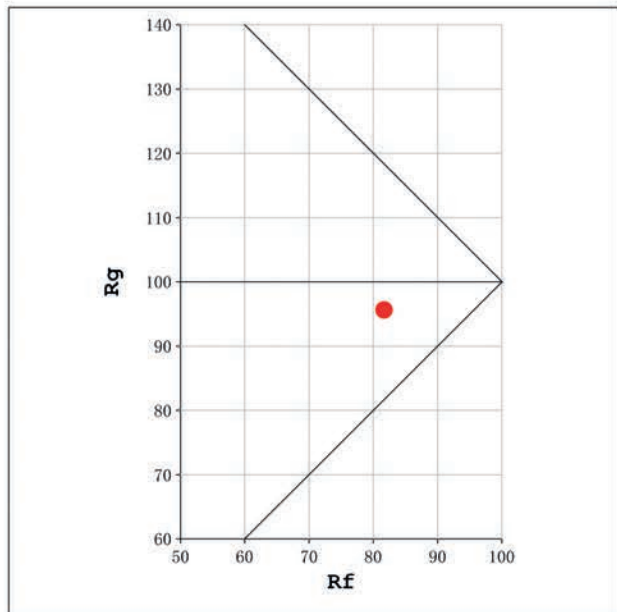
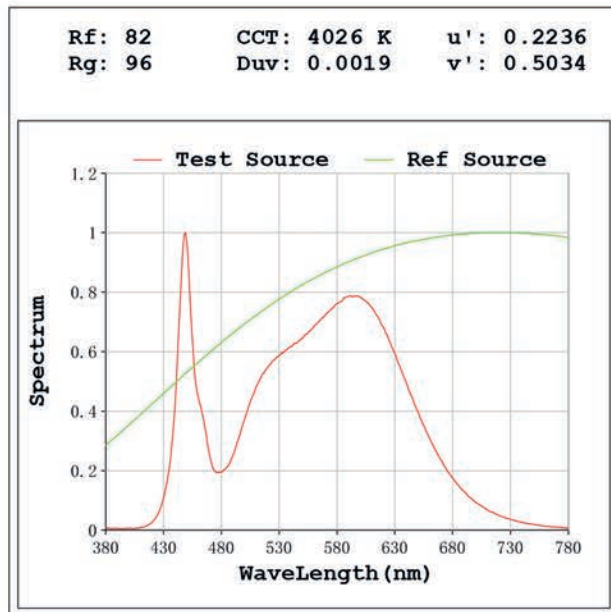
Flux = 1358 lm Eff. : 132.92 lm/W Fe = 4.075 W

Electrical parameters:

V = 23.998 V I = 0.4256 A P = 10.21 W PF = 1.000

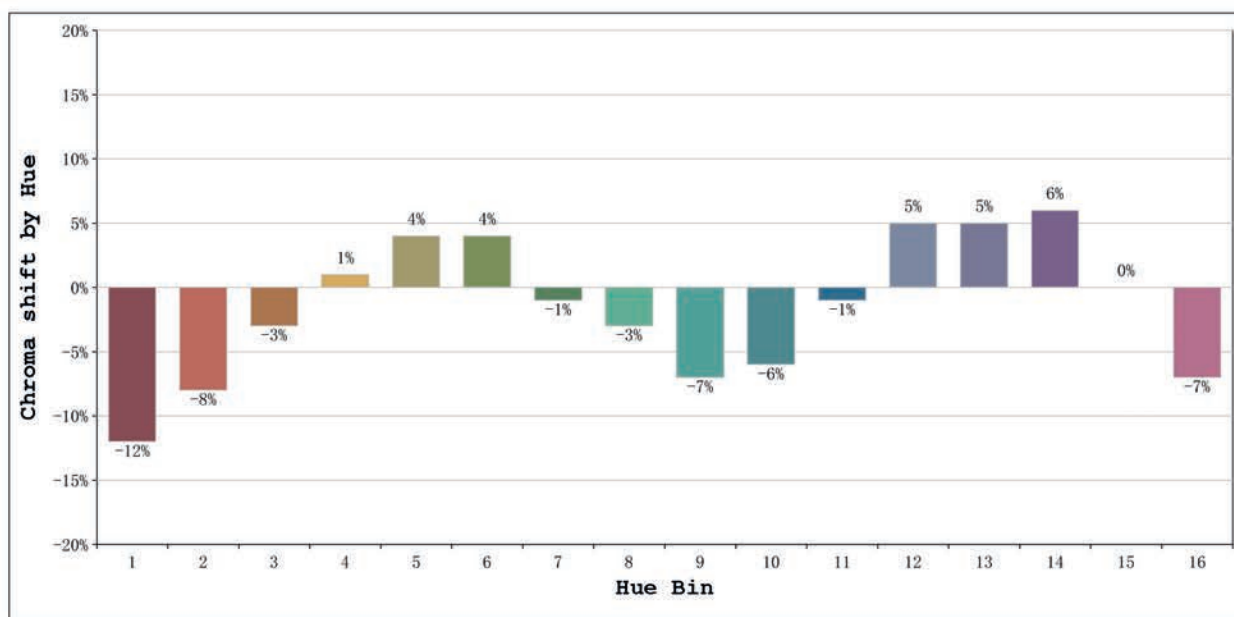
Status: Integral T = 1102 ms Ip = 49704 (76%)

Model:Ecoled Comfort basic 4000k	Number: 36.086
Tester:Sergio Carneros	Date:2024-11-21 13:58:49
Temperature:27Deg	Humidity:35%
Manufacturer:Luz Negra S.L.	Remarks:tira rigida de 480mm



Model:Ecoled Comfort basic 4000k
 Tester:Sergio Carneros
 Temperature:27Deg
 Manufacturer:Luz Negra S.L.

Number: 36.086
 Date:2024-11-21 13:58:49
 Humidity:35%
 Remarks:tira rigida de 480mm



			Graphic shift(%)	
Hue Bin	Hue Angle	Rf	Chroma	Hue
1	0.0° - 22.5°	76	-12	0
2	22.5° - 45.0°	78	-8	7
3	45.0° - 67.5°	74	-3	12
4	67.5° - 90.0°	86	1	8
5	90.0° - 112.5°	89	4	5
6	112.5° - 135.0°	91	4	-1
7	135.0° - 157.5°	83	-1	-8
8	157.5° - 180.0°	90	-3	-3
9	180.0° - 202.5°	87	-7	1
10	202.5° - 225.0°	79	-6	9
11	225.0° - 247.5°	78	-1	15
12	247.5° - 270.0°	81	5	7
13	270.0° - 292.5°	87	5	-4
14	292.5° - 315.0°	78	6	-13
15	315.0° - 337.5°	75	0	-15
16	337.5° - 360.0°	74	-7	-10

Model:Ecoled Comfort basic 4000k Number: 36.086
 Tester:Sergio Carneros Date:2024-11-21 13:58:49
 Temperature:27Deg Humidity:35%
 Manufacturer:Luz Negra S.L. Remarks:tira rigida de 480mm